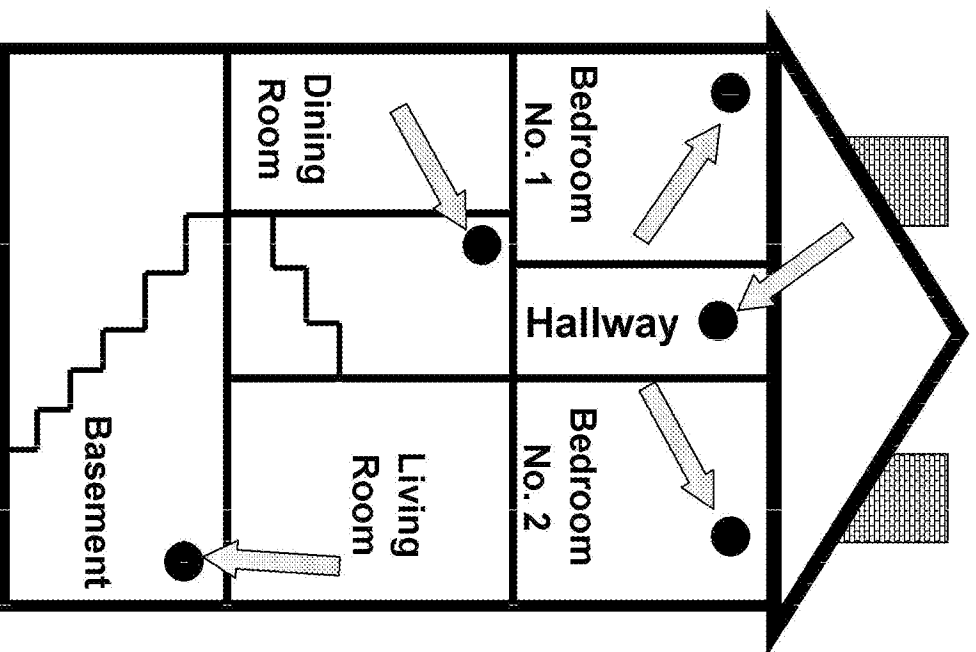
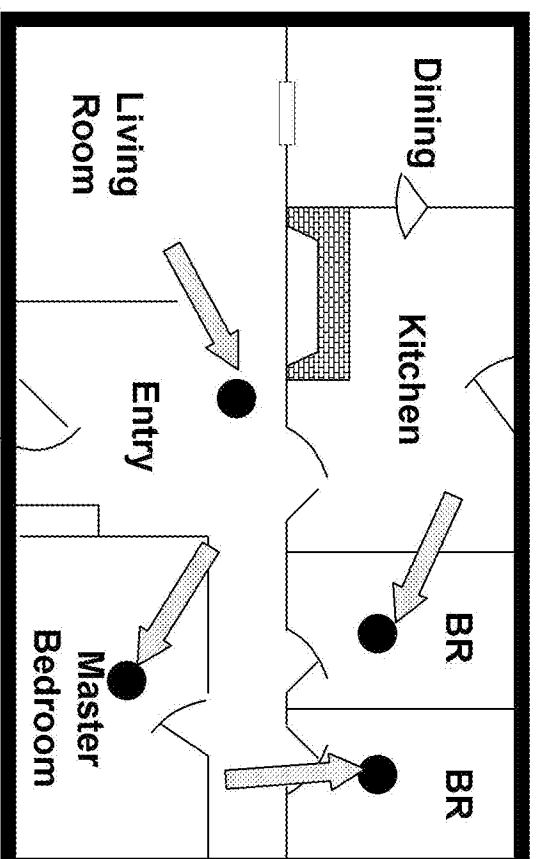


On Each Level

Of Home



SMOKE DETECTORS SAVE LIVES



** Replace every smoke detector every 10 years.

** Select the lithium-battery smoke detectors so the batteries will last as long as the detector unit itself.

** Install at least 1 smoke detector on every level of the home.

** Install 1 smoke detector in every bedroom in the home.

** Strobe detectors for hearing impaired individuals.

** Test your smoke detectors on the first day of every month.

** Lithium batteries should last 10 years. For all other batteries, change them whenever you change your clock for Daylight Savings Time.